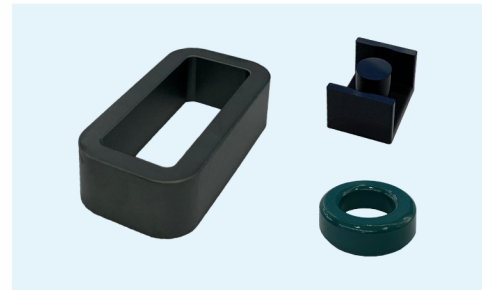


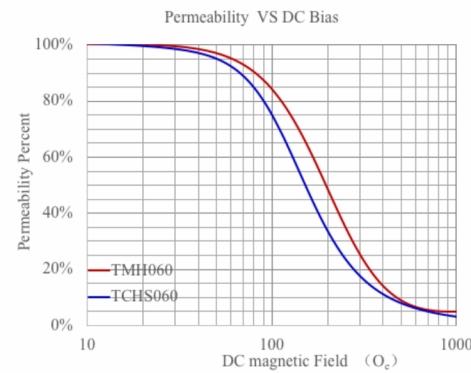
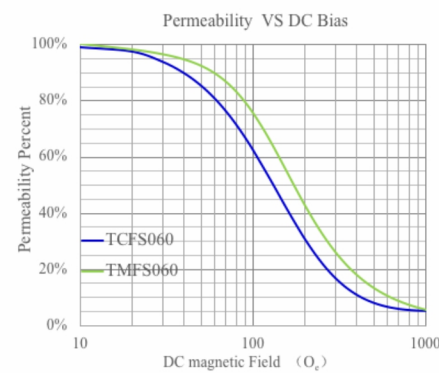
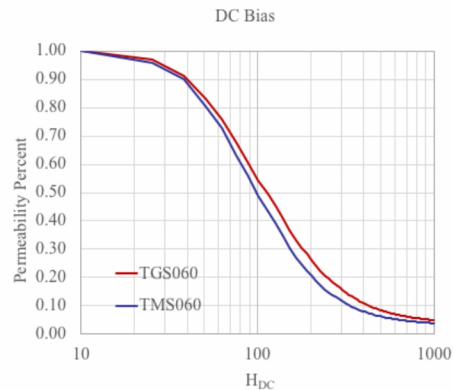
功率因数校正 PFC

- 1.应用于OBC/ 充电桩内功率因数校正器件
- 2.推荐材料：TMS / TGS / TMFS / TCFS / TMH等
- 3.推荐形状：T / UT / EQ

1. Application : OBC /
Charger Station Power Factor Correction
2. Suggested Material : TMS / TGS / TMFS / TCFS / TMH
3. Suggested CORE Shape : T / UT / EQ

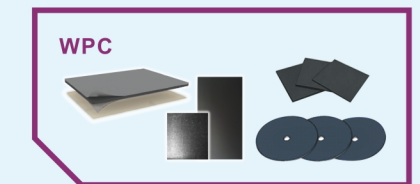
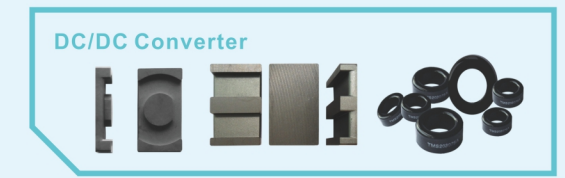
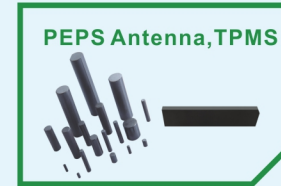


	FeSiAl (TMS)	FeSi (TMFS)	High-Flux (TMH)	TCFS	TCHS	TGS
μ_e	26-125	26-90	14-160	26-90	26-125	60-90
Bs(T)	1.05	1.6	1.5	1.05	1.2	1.05
Tc(°C)	500	700	500	500	500	500
Temp.Stability	good	better	better	better	better	better
DC Bias $\mu_{e60}@100Oe$	50%	75%	83%	64%	73%	55%
Core Loss $\mu_{e60}@50kHz/100mT$	240	580	230	280	210	140



汽车电子用软磁磁心

Soft Magnetic Cores for Automotive Electronics



天通控股股份有限公司

TDG HOLDING CO., LTD.

杜先生 Mr. Du +86-151 6739 2108 / dch@tdgcore.com

洪先生 Mr. Hong +86-180 1265 1185 / hjj@tdgcore.com

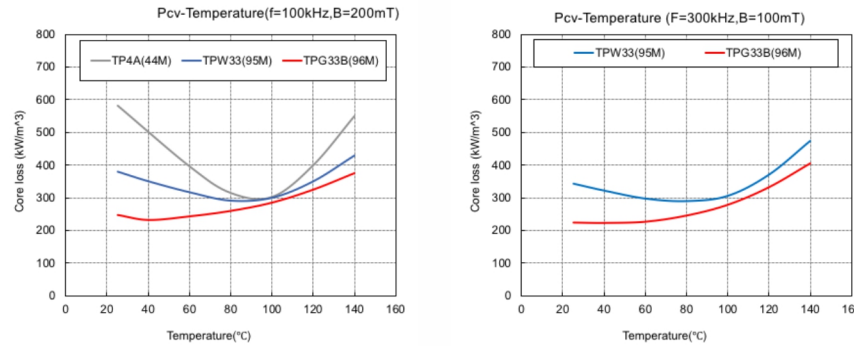
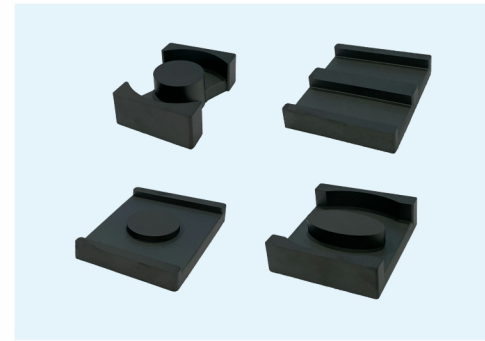
邮箱 / email: tdgcore@tdgcore.com http:// www.tdgcore.com

TDG

变压器 Transformer

1. 应用于OBC/DCDC/HID等
2. 推荐材料：TPG33B / TPG33 / TPW33
3. 推荐形状：PQ / EE / ER / ED

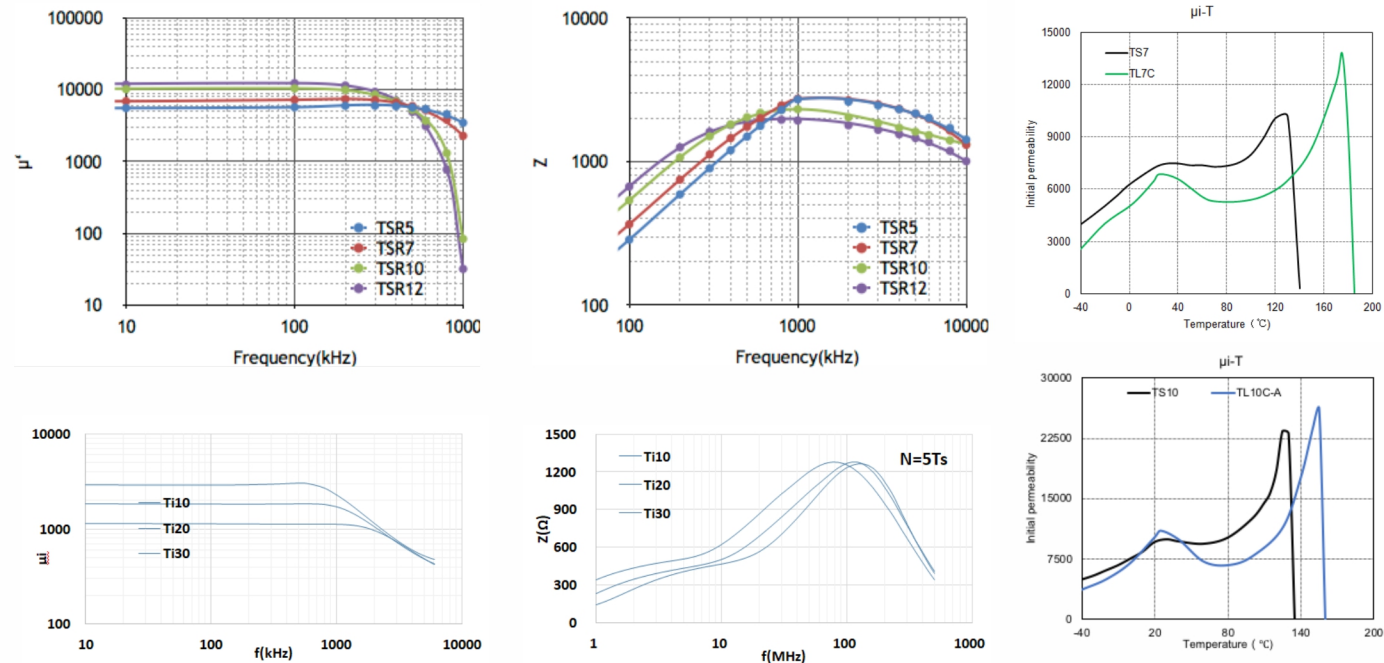
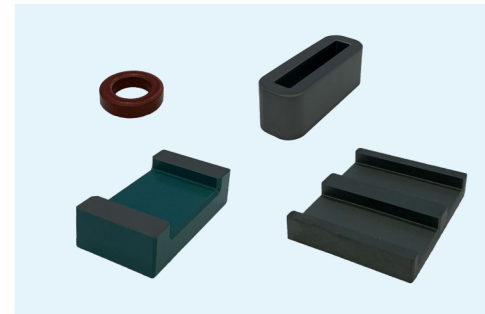
1. Application: On board charger / DCDC convertor / HID Buck inductor
2. Suggested Material: TPG33B / TPG33 / TPW33
3. Suggested CORE Shape: PQ / EE / ER / ED



滤波器 EMI Filter

1. 应用于各共模/差模电感，BUS BAR 等滤波器件
2. 推荐材料：TSR系列 / TL-C系列 / TN系列 / Ti系列
3. 推荐形状：T / FT / EE / UU

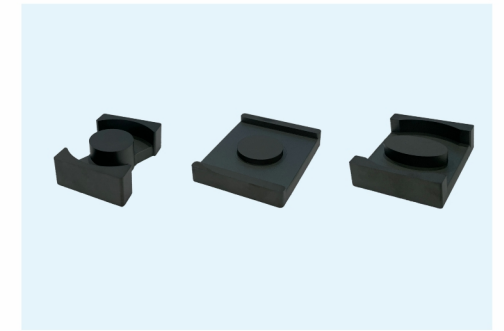
1. Application: CMC / DMC / BUS BAR / EMI Filter
2. Suggested Material: TSR Series / TL-C Series / TN Series / Ti Series
3. Suggested CORE Shape: T / FT / EE / UU



谐振电感 LLC Choke

1. 应用于OBC/DCDC等
2. 推荐材料：TPB22 / TPB16
3. 推荐形状：PQ / ER / ED

1. Application: On board charger / DCDC convertor
2. Suggested Material: TPB22 / TPB16
3. Suggested CORE Shape: PQ / ER / ED



Material		TP4A	TPB22	TPB12	TPB16
permeability	μ_i 25°C	2400±25%	2200±25%	1200±25%	1200±25%
Saturation	B_s (mT) 25°C	510	540	560	590
flux density	1194A/m 100°C	390	450	475	480
Core loss	P_{Cv} 25°C	600	700	1100	1000
	(kW/m³) 100°C	300	320	500	650
Curie temperature	T_c (°C)	≥215	≥255	≥285	≥285
Electrial resistivity	ρ (Ω·m)	6.5	4	6	5
Density	d (kg/m³)	4.8×10^3	4.8×10^3	4.8×10^3	4.8×10^3

