

TDCG

TDCG 天通控股股份有限公司
TDCG HOLDING CO.,LTD.

SOFT MAGNETIC CORES FOR AUTOMOTIVE ELECTRONICS

汽车电子用软磁磁心

TDCG 天通控股股份有限公司
TDCG HOLDING CO.,LTD.

地址: 中国浙江省海宁市经济开发区双联路129号
ADD: No. 129 Shuanglian Rd, Economic Development Zone,
Haining, Zhejiang, China

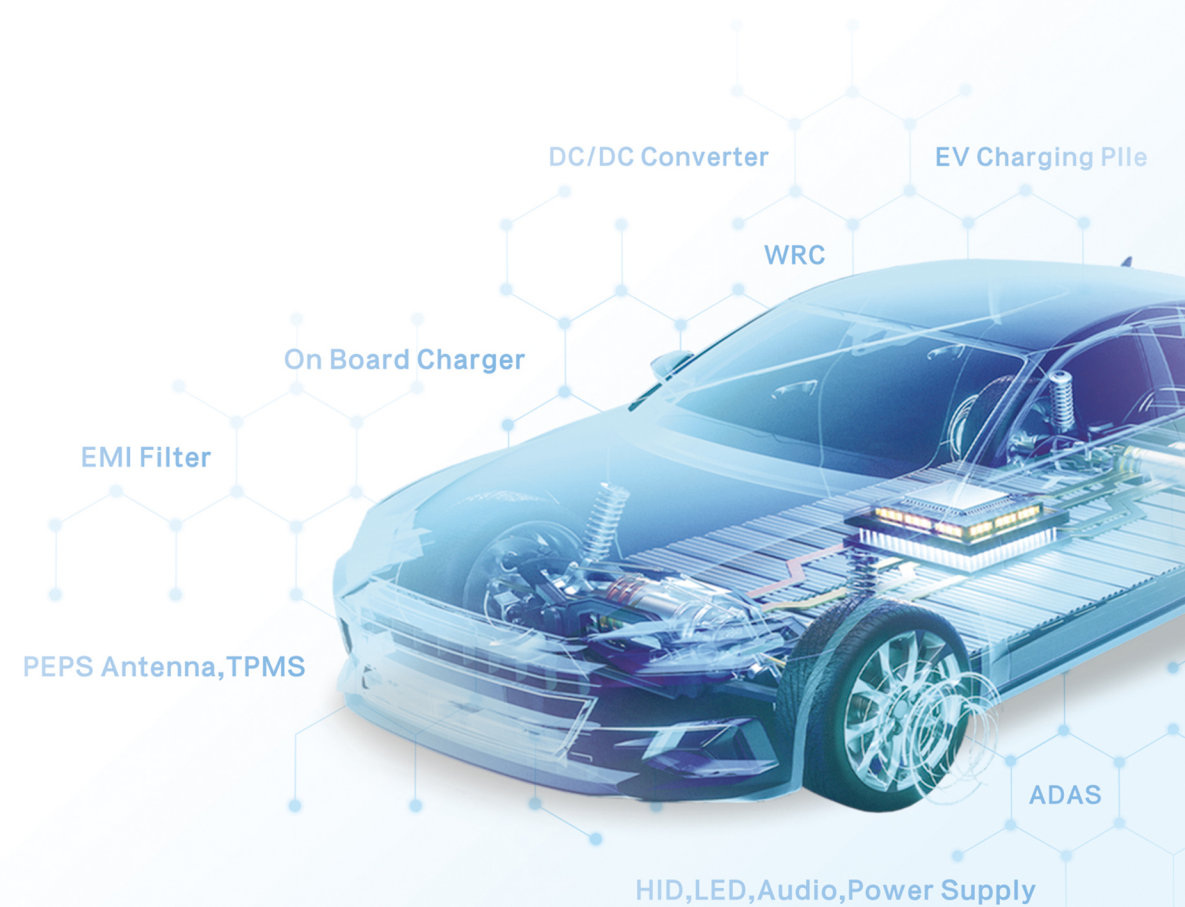
电话TEL: +86-573-8768 3593
传真FAX: +86-573-8768 9999



线上商城



微信公众号



汽车电子用软磁磁心

Soft Magnetic Cores for Automotive Electronics

WPC

DC/DC Converter

HID,LED,Audio,Power Supply

On Board Charger

PEPS Antenna,TPMS

Boost Inductor

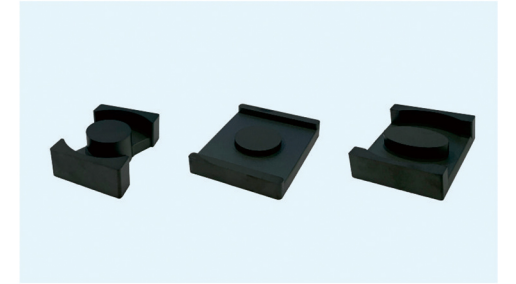
ADAS

EMI Filter

EV Charging Pile

谐振电感 LLC Choke

- 1.应用于OBC/DCDC等
- 2.推荐材料：TPB22 / TPB16
- 3.推荐形状：PQ / ER / ED

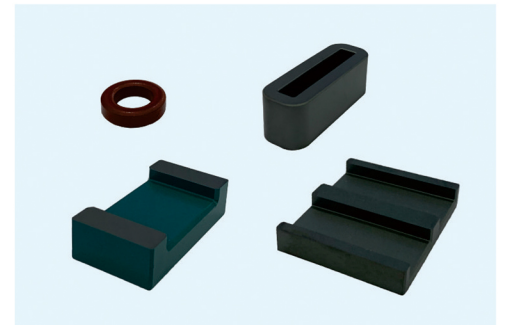


1. Application : On board charger / DCDC convertor
2. Suggested Material : TPB22 / TPB16
3. Suggested CORE Shape : PQ / ER / ED

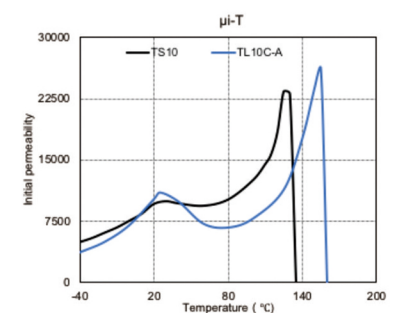
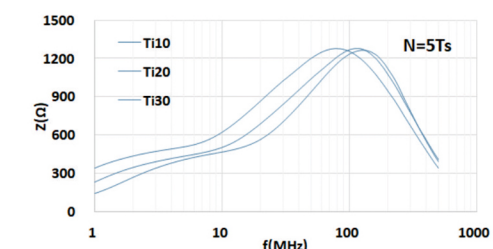
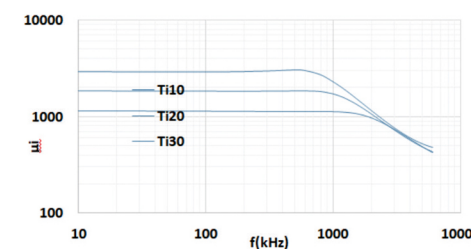
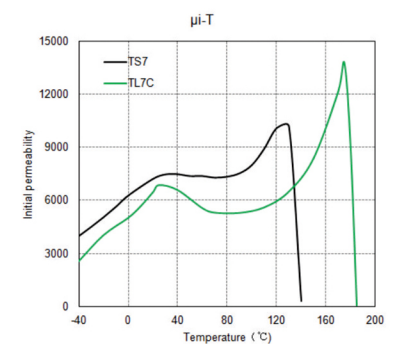
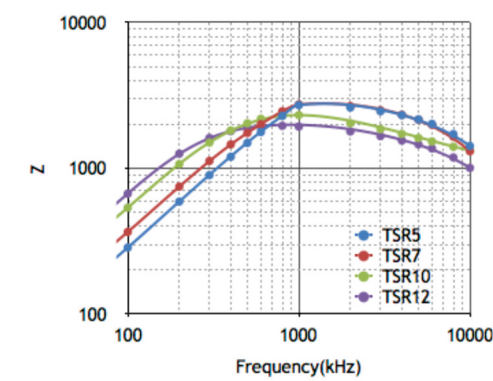
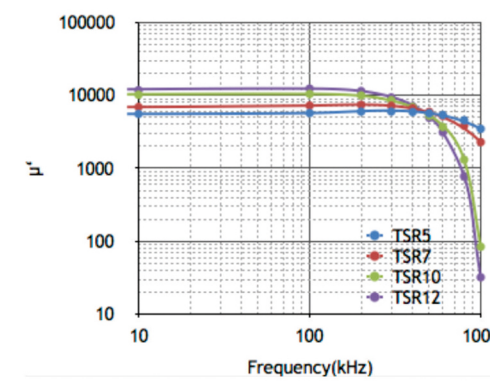
Material			TP4A	TPB22	TPB12	TPB16
permeability	μ_i	25°C	2400±25%	2200±25%	1200±25%	1200±25%
Saturation	B_s (mT)	25°C	510	540	560	590
flux density	1194A/m	100°C	390	450	475	480
Core loss	P_{cv} (kW/m ³)	25°C	600	700	1100	1000
		100°C	300	320	500	650
Curie temperature	T_c (°C)		≥215	≥255	≥285	≥285

滤波器 EMI Filter

- 1.应用于各共模/差模电感，BUS BAR 等滤波器件
- 2.推荐材料：TSR系列 / TL-C系列 / TN系列 / Ti系列
- 3.推荐形状：T / FT / EE / UU



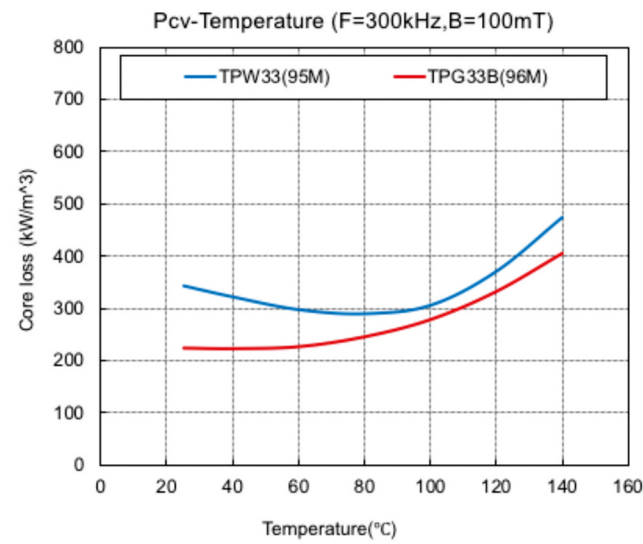
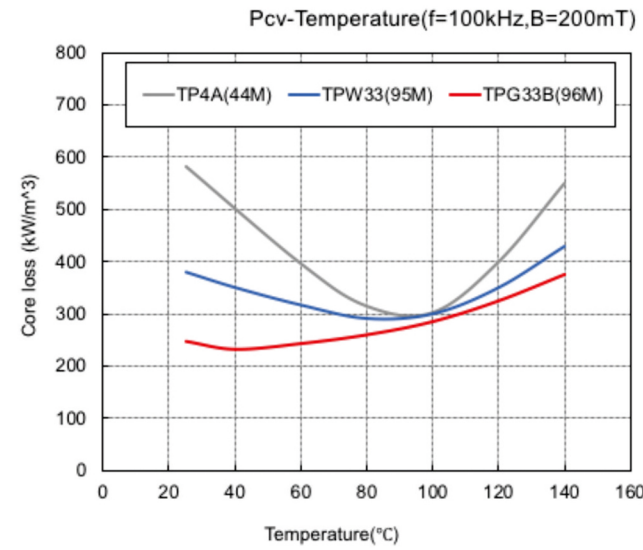
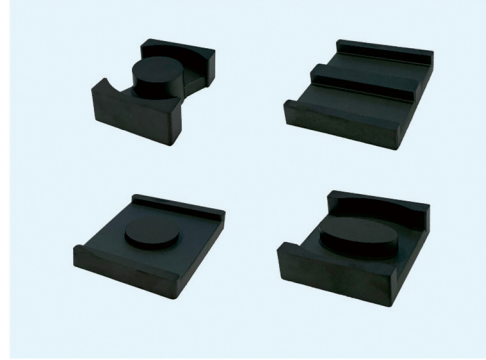
1. Application : CMC / DMC / BUS BAR / EMI Filter
2. Suggested Material : TSR Series / TL-C Series / TN Series / Ti Series
3. Suggested CORE Shape : T / FT / EE / UU



变压器 Transformer

- 1.应用于OBC/DCDC/HID等
- 2.推荐材料：TPG33B / TPG33 / TPW33
- 3.推荐形状：PQ / EE / ER / ED

1. Application: On board charger / DCDC convertor / HID Buck inductor
2. Suggested Material: TPG33B / TPG33 / TPW33
3. Suggested CORE Shape: PQ / EE / ER / ED

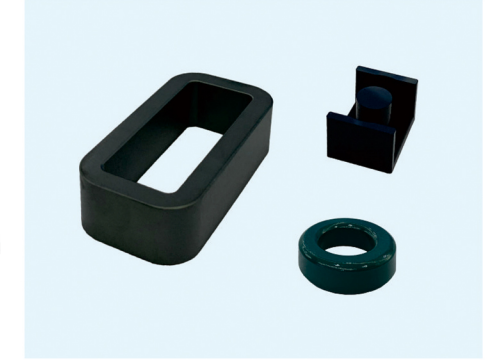


Material			TP4A	TPW33	TPG33B
Permeability	ui	25 °C	2400±25%	3300±25%	3500±25%
Saturation	Bs(mT)	25 °C	510	530	540
flux density	1194A/m	100°C	390	410	420
Core loss	PCV	25 °C	600	380	240
		100°C	300	300	280
		120°C	400	350	320
		140°C	550	450	370
Curie temperature	Tc(°C)	Min	215	220	215

功率因数校正 PFC

- 1.应用于OBC/ 充电桩内功率因数校正器件
- 2.推荐材料：TMS / TGS / TMFS / TCFS / TMH等
- 3.推荐形状：T / UT / EQ

1. Application : OBC / Charger Station Power Factor Correction
2. Suggested Material : TMS / TGS / TMFS / TCFS / TMH
3. Suggested CORE Shape : T / UT / EQ



	FeSiAl (TMS)	FeSi (TMFS)	High-Flux (TMH)	TCFS	TCHS	TGS
μ_e	26-125	26-90	14-160	26-90	26-125	60-90
Bs(T)	1.05	1.6	1.5	1.05	1.2	1.05
Tc(°C)	500	700	500	500	500	500
Temp.Stability	good	better	better	better	better	better
DC Bias $\mu_{e60}@100Oe$	50%	75%	83%	64%	73%	55%
Core Loss $\mu_{e60}@50kHz/100mT$	240	580	230	280	210	140

